

Term 2 Brief 2

Typology workshop

First you need to get the plans and sections from the handout. Be carefull, you will need to figure out the scale. You will need to do the model at 1/50 scale in white foamcard.

After finishing your cardboard model, you will need to do a computer 3D model.

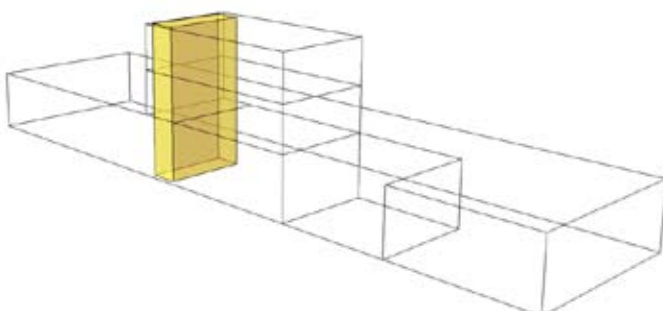
Use basic white render for the computer model

describe in term of spatial volume the different concepts:

- wet
- horizontal extention
- vertical extention
- compression
- light
- day
- night
- views
- access

you are aiming at getting a clear simple 3 dimensional representation of each concepts in the context of the articulation of the overall building.

*vertical*



*night*

